

Pg 3 3D Dinosaur Project Inkjet Printer Settings with 3DMasterKit

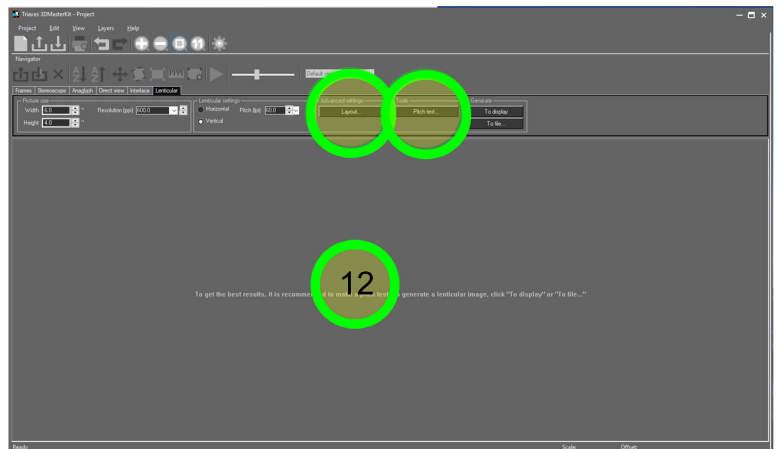
- 11 You can **Click the Arrow** to see a visual movement of your image.

When ready **Click on the Lenticular Tab** for **Printing Options**.



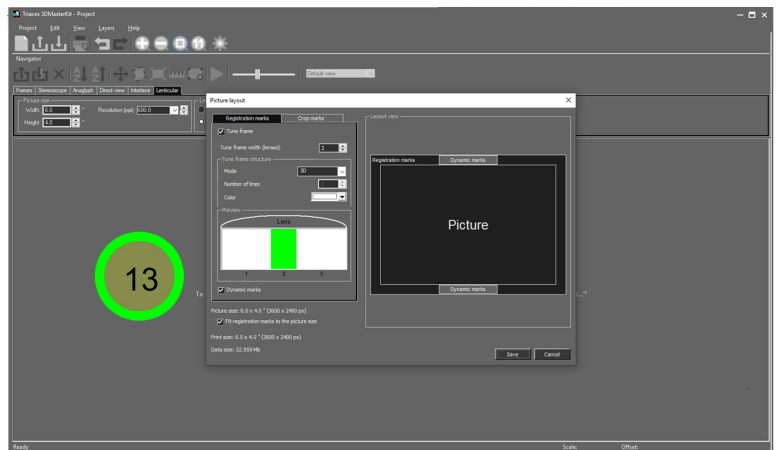
- 12 For Registration Marks with Inkjet printers Click Advanced Settings, Layout.

If you need to make a Pitch Text Click the Link and follow the instructions.



- 13 **Click Tune Frame** to activate Registration Marks and select options.

When finished click Save.



- 14 Verify **Print Size** is 6.2 x 4.2. Verify **Resolution** is 600 and **LPI** is 60 for VueThru Lenticular Photo Frames or Lenticular Lens with Adhesive. Click **Generate to Display**.

